

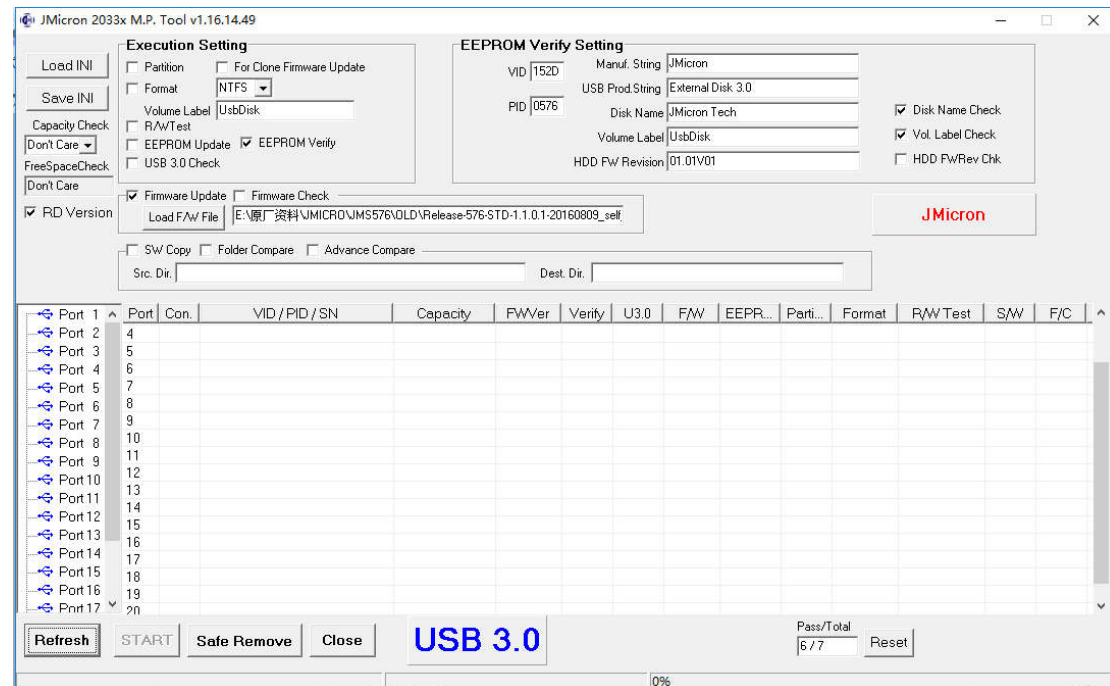
## MP Tool User Guide

**Note:** Make sure the HDD enclosure/Dock access in your computer system before following below steps:

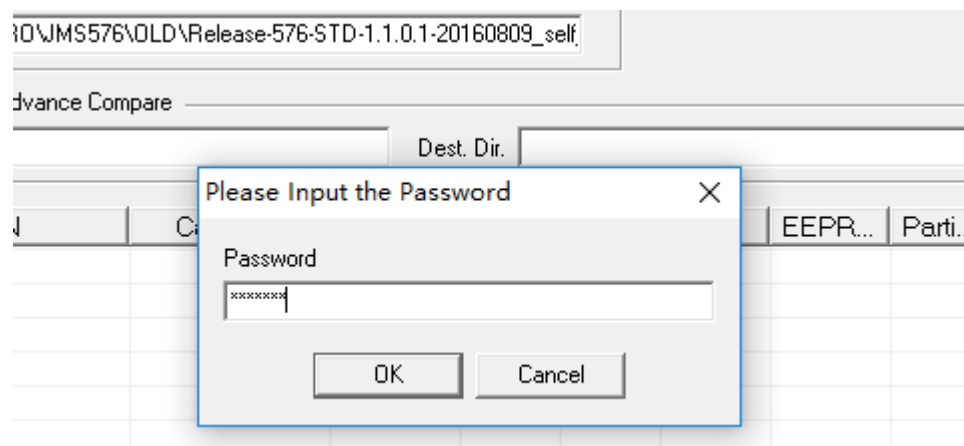
Download the updated software from the following URL.

<https://www.rshtech.com/download/>

### 1. Click the JMMassProd2\_v1\_16\_14\_49.exe



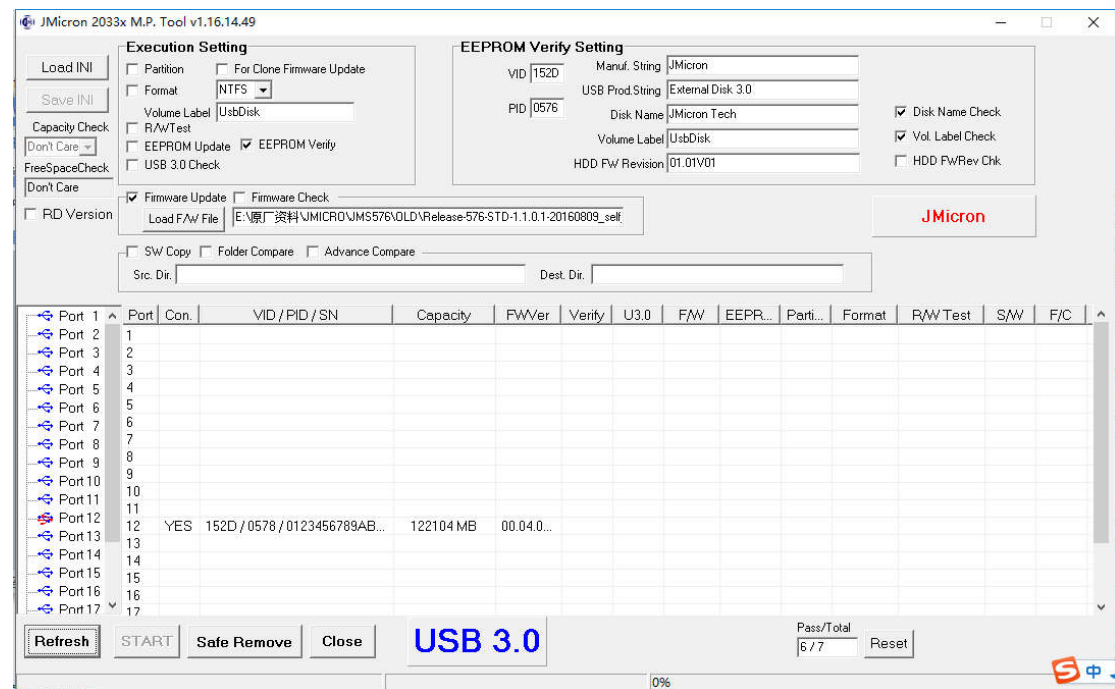
### 2. Click RD Version, enter the password "jmicron".



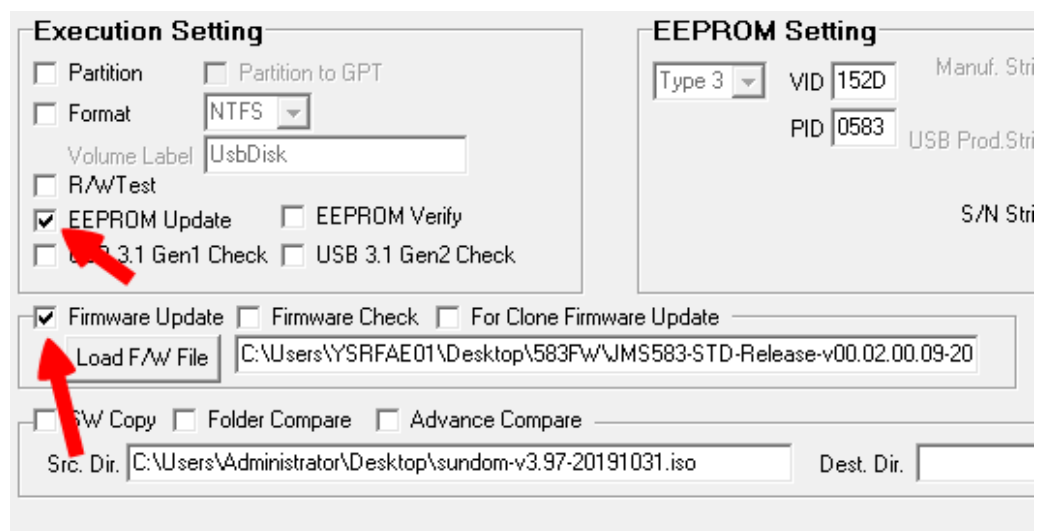
### 3. Connect the HDD dock with the SSD or HDD inserted, and wait for the PC to recognize the device.



4. After connecting to the PC, MP TOOL will display the product information.



5. Select the options shown in the figure below.



6. Select the Firmware corresponding to the IC

☐ USB 3.0 Check

☒ Firmware Update ☐ Firmware Check

Load F/W File: E:\原厂资料\JMICRO\JMS576\OLD\Release-576-STD-1.1.0.1-20160809\_self

☐ SW Copy ☐ Folder Compare ☐ Advance Compare

Src. Dir.: Dest. Dir.:

Port	Con.	VID / PID / SN	Capacity	FWVer	Verify	U3.0	F/W	EEPR...	Par
4									

**7. Click START.**

Port	Con.	VID / PID / SN	Capacity	FWVer	Verify	U3.0	F/W	EEPR...	Par
Port 7									
Port 8									
Port 9									
Port 10									
Port 11									
Port 12	12	YES 152D / 0578 / 0123456789AB...	122104 MB			00.04.0...			
Port 13	13								
Port 14	14								
Port 15	15								
Port 16	16								
Port 17	17								

Refresh START Safe Remove Close **USB 3.0**

0%

**8. It will show Pass if succeeded.**

JMicron 2033x M.P. Tool v1.16.14.49

Load INI Save INI

Capacity Check: Don't Care

FreeSpaceCheck: Don't Care

☒ RD Version

Execution Setting

☐ Partition ☐ For Clone Firmware Update

☐ Format: NTFS

Volume Label: UsbDisk

☐ R/W Test

☒ EEPROM Update ☐ EEPROM Verify

☐ USB 3.0 Check

EEPROM Setting

Type 3 VID: 152D PID: 0578

HDD String: JMicron Tech

Manuf. String: JMicron

USB Prod String: External Disk 3.0

S/N String: 00000000456F

Map to HDD String: ☒

Auto Increase: ☒

Standby Timer(Min.): 30

Load F/W File: E:\原厂资料\JMICRO\JMS576\最新的FW\JMS576\_00.04.00.05.bin

SW Copy Folder Compare Advance Compare

Src. Dir.: Dest. Dir.:

**JMicron**

Port	Con.	VID / PID / SN	Capacity	FWVer	Verify	U3.0	F/W	EEPR...	Parti...	Format	R/W Test	S/W	F/C
Port 1	1												
Port 2	2												
Port 3	3												
Port 4	4												
Port 5	5												
Port 6	6												
Port 7	7												
Port 8	8												
Port 9	9												
Port 10	10												
Port 11	11												
Port 12	12	YES 152D / 0578 / 0123456789AB...	122104 MB			00.04.0...							
Port 13	13												
Port 14	14												
Port 15	15												
Port 16	16												
Port 17	17												

Refresh **START** Safe Remove Close **USB 3.0** **Pass**

Pass/Total: 7/8 Reset

100%